

2017 DODGE GRAND CARAVAN SXT

For more information visit: www.dodge.com
or call 1-800-4ADODGE

FCA US LLC

THIS VEHICLE IS MANUFACTURED TO MEET SPECIFIC UNITED STATES REQUIREMENTS. THIS VEHICLE IS NOT MANUFACTURED FOR SALE OR REGISTRATION OUTSIDE OF THE UNITED STATES.

MANUFACTURER'S SUGGESTED RETAIL PRICE OF THIS MODEL INCLUDING DEALER PREPARATION

Base Price: **\$31,395**

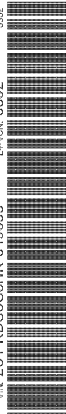
DODGE GRAND CARAVAN SXT
Exterior Color: White Knuckle Clear Coat Exterior Paint
Interior Color: Black Light Graystone Interior Colors
Interior: 361 Rear Air Slats, 81 Rear Air Slats
Engine: 3.6 Liter I6 24-Valve V6 with 170 H.P. Gas
Transmission: 6-Speed Automatic 62 LE Transmission

STANDARD EQUIPMENT (UNLESS REPLACED BY OPTIONAL EQUIPMENT)
FUNCTIONAL/SAFETY FEATURES

Advanced Multistage Front Airbags
Supplemental Side-Curtain Airbags in All Rows
Supplemental Front Seat-Mounted Side Airbags
LATCH Ready Child Seat Anchor System
Power Liftgate
Right Power Sliding Door
Left Power Sliding Door
Super Console
Daytime Running Lamps
Anti-Lock 4-Wheel Heavy Duty Disc Brakes
Electronic Stability Control
Tire Pressure Monitoring Sensor
Active Head Restraints
Keyless Entry with Immobilizer
Power Door Locks
20-Gallon Fuel Tank
Fuel Economyizer
Trailer Sway Dampening
Tire Inflator Kit (No Compact Spare)

INTERIOR FEATURES
Second-Row Buckets with Fold-in-Floor Seats
2nd/3rd-Row "Stow 'n Go" w/3rd-Row Tailgate Seats
Power Front One-Touch Windows
Second-Row Power Windows
Power Third-Row Vented Windows
3-Zone Manual Temperature Control
Steering Wheel Mounted Audio Controls
Tilt / Telescope Steering Column
Radio 130
6 Speakers
12-Volt DC Front and Rear Power Outlets
12-Volt Auxiliary Power Outlet
Dual Glove Boxes
Overhead Console
Lower Instrument Panel Storage Bin
Left Rear Quarter Trim Storage Bin
Rear View Day / Night Mirror
Easy Clean Floor Mats
EXTERIOR FEATURES
PZ25/65R17 BSW All Season Tires
Black Side Roof Rails
Power Heated Exterior Mirrors with Manual Fold-Away
Body-Color Body Side Molding

Assembly Point/Port of Entry: WINNIPEG, ONTARIO, CANADA
VIN: 2C4RDGCG3HR-649533
LE-VOLK-6652



THIS LABEL IS ADDED TO THIS VEHICLE TO COMPLY WITH FEDERAL LAW. THE LABEL CANNOT BE REMOVED.
* STATE AND/OR LOCAL LAWS IN ANY JURISDICTION MAY REQUIRE THIS LABEL TO BE SUPPLIED AND
INSTALLED. OPTIONS AND ACCESSORIES ARE NOT INCLUDED IN THIS PRICE. DISCOUNT, IF ANY,
IS BASED ON PRICE OF OPTIONS IF PURCHASED SEPARATELY.

EPA Fuel Economy and Environment DOT

These estimates reflect new EPA methods beginning with 2017 models.

MPG
Minivan range from 19 to 52 MPG.
The best vehicle rates 136 MPGe. Values are based on gasoline and do not reflect performance and ratings based on E85.

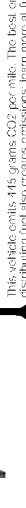
20 city
17 highway
25 combined city/hwy
gallons per 100 miles



Driving Range
Gasoline: 400 miles
Ethanol (E85): 280 miles

Annual fuel cost
\$1,850

Fuel Economy & Greenhouse Gas Rating (tailpipe only)
This vehicle emits 415 grams CO₂ per mile. The best emits 0 grams per mile (tailpipe only). Producing and distributing fuel also causes emissions. Learn more at fuelconomy.gov



Smog Rating (tailpipe only)
This vehicle earns a 6 smog rating. The best earns a 10 smog rating. Producing and distributing fuel also causes emissions. Learn more at fuelconomy.gov

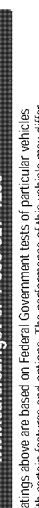
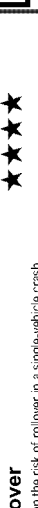
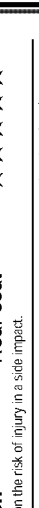
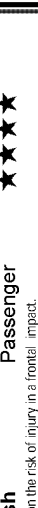
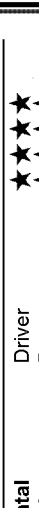
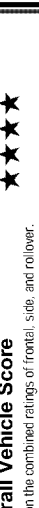


Actual results will vary for many reasons, including driving conditions and how you drive and maintain your vehicle. The average new vehicle gets 26 MPG and cost \$7,000 to fuel over 5 years. Cost estimates are based on 15,000 miles per year at \$2.35 per gallon. This is a dual fueled automobile. MPGe is miles per gasoline gallon equivalent. Vehicle emissions are a significant cause of climate change and smog.

flexconomy.gov
Calculate personalized estimates and compare vehicles



Smartphone QR Code



GOVERNMENT 5-STAR SAFETY RATINGS

Overall Vehicle Score ★★★★★
Based on the combined ratings of frontal, side, and rollover.
Should ONLY be compared to other vehicles of similar size and weight.

Frontal Crash ★★★★★
Based on the risk of injury in a frontal impact.
Should ONLY be compared to other vehicles of similar size and weight.

Side Crash ★★★★★
Based on the risk of injury in a side impact.

Rollover ★★★★★
Based on the risk of rollover in a single-vehicle crash.

Star ratings range from 1 to 5 stars (★★★★★) with 5 being the highest.
Source: National Highway Traffic Safety Administration (NHTSA)
www.safercar.gov or 1-888-327-4236

The safety ratings above are based on Federal Government tests of particular vehicles equipped with certain features and options. The performance of this vehicle may differ.

PARTS CONTENT INFORMATION

FOR VEHICLES IN THIS CARLINE:
U.S./CANADIAN PARTS CONTENT: 70%
MAJOR SOURCES OF FOREIGN PARTS

CONTENT: 18%
MEXICO: 18%
NOTE: PARTS CONTENT DOES NOT INCLUDE FINAL ASSEMBLY, DISTRIBUTION, OR OTHER NON-PARTS COSTS.

FOR THIS VEHICLE:
FINAL ASSEMBLY POINT:
WINNIPEG, ONTARIO, CANADA

COUNTRY OF ORIGIN:
ENGINE: UNITED STATES
TRANSMISSION: UNITED STATES